

# THE WORLD PUZZLE NEWSLETTER 7

Official publication of the World Puzzle Federation



WORLD PUZZLE FEDERATION

## World Puzzle Federation Head office

Kruislaan 419  
1098 VA Amsterdam  
The Netherlands  
Tel/Fax: +31.20.8884643  
E-mail: [office@worldpuzzle.org](mailto:office@worldpuzzle.org)  
Internet: [www.worldpuzzle.org](http://www.worldpuzzle.org)



WORLD PUZZLE FEDERATION

**World Puzzle Championship 2002: Oulu!** ■ **10th WPC - 2001:**  
**End of a Puzzle Odyssey** ■ **From behind the scenes of the 10th WPC**  
■ **Selected puzzles from the 10th WPC** ■ **Team and individual results**  
■ **Team photos** ■ **Report on the 3rd General Assembly of the World Puzzle Federation** ■ **WPF Financial Report 2000-2001** ■ **A Puzzler's CV: Adam Sumera** ■ **Puzzling in Poland** ■ **Famous Puzzlemakers: Henry Ernest Dudeney** ■ **list of current members**

**Address:**  
Kruislaan 419  
1098 VA Amsterdam  
The Netherlands  
**Tel/Fax:**  
+31.20.8884643  
**E-mail:**  
office@worldpuzzle.org  
**Internet:**  
www.worldpuzzle.org



**The WORLD PUZZLE NEWSLETTER**  
Official publication of the  
World Puzzle Federation

**Editor**  
Peter Ritmeester  
ritmeester@worldpuzzle.org

**Copy Editors**  
Will Shortz  
Nancy Schuster

**Newsletter Design**  
Ivo van IJzendoorn

**WPF Logo Design**  
Michael Douma

**Printing**  
Ponsen & Looijen b.v.

### World Puzzle Federation

The World Puzzle Federation is an association of legal bodies with an interest in puzzles. Only one member per country can belong to the WPF. The WPF follows the Olympic standard in what constitutes a country. Information on present members and criteria for membership can be found in the members section on pages 26-27 of this issue.

*Goals of the World Puzzle Federation are:*

- to provide the means for an international exchange of puzzle ideas
- to stimulate innovations in the field of puzzles
- to supervise the annual World Puzzle Championship (WPC) and other puzzle activities
- to foster friendship among puzzle enthusiasts world-wide

Chairman: Will Shortz (USA)  
General Secretary: Peter Ritmeester (The Netherlands)

# The WORLD PUZZLE NEWSLETTER 7

Official publication of the World Puzzle Federation

## Editorial

This issue will be dedicated for the most part to that terrific WPC in Brno last year. Vitezslav Koudełka, Zdenek Chromý, the late Jaroslav Müller and all the others did it again. Although Jaroslav passed away before the WPC, to me he was still very much present, not only because of the wonderful puzzles he left for the event, but also by my memories. Ever since we met in 1993, when I think about him I start smiling, remembering him as a very cheerful man, in the center of a group of people laughing, offering us a sip from his own home-brewed schnapps. A very special man.

As in 1993, the WPC in Brno featured first-rate puzzles, wonderful accommodations and a perfect organization in general. In addition, a record 105 competitors from 21 countries took part. In this issue Vitezslav and Zdenek give you a behind-the-scenes look at the championship (pages 4-17), plus many puzzles and all the results.

But this issue is also about the future. Preparations for the next WPC in Oulu are well under way. On the next two pages you'll read more about this undoubtedly special WPC. At the moment, not all details about accommodations are known. If you would like to know more, please check our website [www.worldpuzzle.org](http://www.worldpuzzle.org) for the latest information.

As in past years, WPF members do not need to make their own qualifying test for Oulu. Again, Will Shortz and Nick Baxter (USA) will present an on-line qualifying test on June 15, made available for puzzlers from all over the world. You may use it to select part or all of your team. If you prefer to organize a qualifying test based on printed puzzles, then you should contact Rob Geensen (The Netherlands). This year again, the printed puzzles from the Dutch National Championship (June 5) will be available for WPF members. Contact information for both is on page 29.

Talking about the website, the news section now has its own mailing list. Puzzlers who subscribe to it will receive an e-mail when there is important news, or when something significant and interesting is added to the site.

Besides the articles on Brno and Oulu, we have stories on Adam Sumera and puzzling in Poland, including a Polish fill-in. Will Shortz's column on famous puzzlemakers this time features Henry Ernest Dudeney, the British puzzle master. This is accompanied by four very nice puzzles by Dudeney, scanned from the original publication.

I hope you will enjoy reading the articles, looking at the photos and solving the puzzles, of course. The next issue will be published in September, right before the WPC in Oulu.

Good puzzling!

Peter Ritmeester  
Editor and General Secretary



Vitezslav Koudełka, director of the World Puzzle Championship 2001 in Brno, Czech Republic, congratulating the individual winner, Ulrich Voigt from Germany. It was Ulrich's second consecutive win.

## CONTENTS

2 World Puzzle Championship 2002: Oulu!  
by Erja Gullstén



### WPC 2001 in Brno, Czech Republic

- 4 10th WPC - 2001: End of a Puzzle Odyssey  
by Vitezslav Koudełka
- 6 From behind the scenes of the 10th WPC  
by Zdenek Chromý
- 8 Selected puzzles from the 10th WPC  
by Zdenek Chromý
- 14 Team and individual results; Team photos



### WPF General Assembly 2001 in Brno, Czech Republic

- 18 Report on the 3<sup>rd</sup> General Assembly of the World Puzzle Federation  
by Will Shortz
- 21 WPF Financial Report 2000-2001  
by Rob Geensen

- 22 A Puzzler's CV: Adam Sumera
- 23 Puzzling in Poland  
by Adam Sumera
- 24 Famous Puzzlemakers: Henry Ernest Dudeney  
by Will Shortz
- 26 WPF membership criteria; list of current members
- 28 Solutions



# The 11th World Puzzle Championship 2002: Oulu!

The 2002 WPC organizing committee:



**Erja Gullstén**  
(erja.gullsten@pp.inet.fi)  
Director



**Juha Hyvönen**  
(juha.hyvonen@iki.fi)  
Competition director



**Tuuli Rauvola**  
(tuulirau@saunalahti.fi)  
Communications

**Taina Grönstrand**  
(taina.gronstrand@luukku.com)  
Treasurer

THE 11TH WORLD PUZZLE CHAMPIONSHIP & CONGRESS



Finland 2002

**Welcome to Finland, a land of thousands of crosswords (and lakes). Welcome to Oulu! We are happy to invite you to the 11th WPC to Oulu, Finland. We are sure that most of you have never been so far up north. Oulu is as far north as central Alaska.**

Thanks to the Gulf Stream though, the climate in Finland is much warmer than in North America and you do not need to be afraid of polar bears, since there are none in Finland (except in the zoos). Outside the Oulu region you may get just a glimpse of reindeer. Near the Arctic Circle however, there are plenty of them.

The championship puzzles will be truly international since there are no 'puzzle factories' in Finland; the World Puzzle Federation (WPF) has agreed to 'import' most of the puzzles, for which we are grateful. In the future, we hope to be able to return the favor.

In Finland (like everywhere), crossword puzzles are a very popular pastime. In a big supermarket you can find up to 50 different crossword magazines. But that's it. You cannot find any other kind of mental workout magazines on the newsstands. It has been estimated that about 15,000 new crossword puzzles are published every year. And only maybe 1000 other types of puzzles, most of them for children.

The organizer of the 11th World Puzzle Championship is *Suomen puzzle-harrastajat Ahaa!* (Finnish Puzzle Association Aha!). The association was founded on February 4th, 2000. The main goal of the association is quite similar to that of the WPF, to promote puzzling in Finland. The first thing to do was to arrange the Finnish Puzzle Championship. The first national final was held in June 2000, and the second final a year later. We may not yet have a large member base, but what we lack in size we compensate for with eagerness.

We welcome you to Finland!

## Tentative Schedule of the 11TH WORLD PUZZLE CHAMPIONSHIP 2002 in Oulu, Finland September 24 - September 29

### Tuesday, September 24

- Arrival all day (handing out the puzzle instructions)
- Contestants will be met at the Oulu airport and brought to hotel
- Get-together party in the evening

### Wednesday, September 25

- Bus trip to the north (Rovaniemi and the Arctic Circle) or sightseeing in Oulu
- Dinner in hotel
- Captains meeting
- Discussion about puzzle instructions in the evening

### Thursday, September 26

- Competition in the morning (beginning at 9:30) and in the afternoon
- (WPF General Assembly simultaneously with individual competition)
- Free time after dinner
- If necessary: Discussion about puzzle instructions

### Friday, September 27

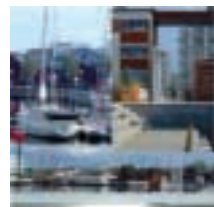
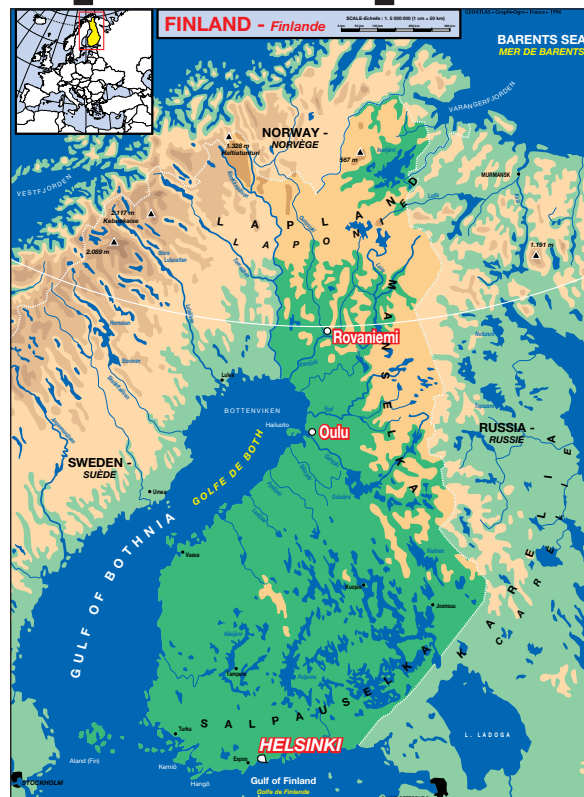
- Competition in the morning (beginning at 9:30) and in the afternoon
- (WPF General Assembly simultaneously with individual competition)
- Free time or optional program in the evening

### Saturday, September 28

- Championship play-off in the morning
- Free time or optional program after lunch
- Dinner, ceremony and farewell party in the evening

### Sunday, September 29

- Departure all day



### Oulu

The city of Oulu was founded by the order of Kaarle IX at the mouth of the Oulu River in 1605. Oulu, which is located on the shore of the Gulf of Bothnia, has been the province's capital since 1776. The official site of Oulu is [www.ouka.fi](http://www.ouka.fi).

In 1776 the most important exports from Oulu were furs, salmon and later also tar, which was used throughout the world to protect wooden ships. Today the basic idea behind the city's international activities is to develop Oulu into the leading centre of competence for the entire north of Europe. The 'tar' of the city of Oulu today, is internationally competitive high level know-how and ability.

Oulu is the sixth largest city with 120,753 inhabitants. The area of Oulu is 382.3 square kilometres. Oulu is considered northern Europe's most significant centre of competence. A significant

amount of high technology know-how has been concentrated in the area. Oulu has Finland's second largest university (founded 1958) and many public and private research institutes. The region is well known for its rapidly growing high technology industry which sells its products throughout the world. The city is thus also an international growth centre.

### Rovaniemi

Rovaniemi, the 'capital' of Northern Finland, is in the lower regions of Lapland at the centre of where the Arctic Circle winds its way through the heart of the Maid of Finland (the name Finns give to describe the shape of the country). The official website of Rovaniemi is [www.rovaniemi.fi](http://www.rovaniemi.fi).

Within 10 kilometers from the city centre you can find undisturbed nature or a busy international airport. Rovaniemi remembers its past but is not afraid to look into the future. People enjoy living there and are also friendly towards visitors.

### How to subscribe

In the championship in Oulu only one team per country is allowed to compete. A team consists of 4 competitors and one captain. If you are interested, please contact your local representative if your country is represented as WPF member (see pages 26-27 of this issue). If your country is not yet represented, then see below.

The basic cost of attendance for each competitor and team captain is USD 400. The basic cost of attendance for other participants (guests) is USD 600. This covers expenses, including a room (shared by 2 or 3 people), meals, sightseeing in Oulu, the competition and official program, and transportation to and from Oulu airport. For a single room, the cost will be higher. We will give more exact information about the cost later and we will tell you when the payment is due.

Team captains, please e-mail to Erja (erja.gullsten@pp.inet.fi) as soon as possible the following:

- if your country will be represented
- do you have a complete team (4 persons + captain)
- the number of guests

You can also send the information by mail to Erja Gullstén, Töyhtöhyppäntie 4, 90540 OULU, Finland or by phone +358 8 556 8546 or +358 50 529 4327.

# 10th World Puzzle Championship or 2001: End of a Puzzle Odyssey

**Dear Friends, Please allow me, as the director of the jubilee 10th World Puzzle Championship, to look back at some of its moments, and with the benefit of time, assess its course. As you know, the 10th World Puzzle Championship took place on 8-13 October 2001 in Brno. Its principal organizer was the KIRA Publishing House in collaboration with the Union of Czech Puzzlers. I am especially pleased by the fact that Brno has, to date, been the only place to host the championship twice.**

Unfortunately, the organization of last year's championship was marked by two sorrowful events. The first was the terrorist attack of 11 September 2001 on the USA, which changed the whole world; and the second and, for us, more personal event was the death of Jaroslav Müller, constructor of excellent puzzles and member of the WPC team of organizers. Both these events had their negative effects on our work.

The 10th WPC saw a record number of participants that for the first time in its history exceeded the hundred mark; 105



↑ A record 105 puzzle-solvers from 21 countries took part in the championship. Here some of them during the trip to Lednice Chateau in South Moravia.

## Perhaps for the first time in history, Wei-Hwa Huang stopped solving puzzles and sang, clapped his hands and laughed.

puzzle-solvers from 21 countries took part in the championship. As the WPF enabled each country to send more four-

↓ Big screens were used during the presentation of the teams



member teams, there were 26 teams competing. I am very sorry that teams from Japan, Australia, India, Yugoslavia and other states could not participate. On the other hand, we were happy to welcome newcomers to the competition – good, sociable teams from Korea and Bulgaria.

I believe that the program for the opening evening was carefully chosen to suit everybody. The performance of an impressionist was most enjoyable. Perhaps for the first time in history, Wei-Hwa Huang from the USA stopped solving puzzles, as he always does, and sang,

clapped his hands and laughed. We also put a great deal of effort into integrating new and funny elements into the puzzles. Thus the 'theater performance' presented by our young assistants was greeted with thunderous applause. Thanks to the Championship company, the assessment of results, the updating of the standings of competitors and the point score were all of world standard. This, in my opinion, was appreciated by all WPC participants.

The whole championship received a great deal of publicity. There were several newspaper articles, radio interviews, and along with some brief news slots, the Czech Television aired a special program dedicated to this important event.

Non-competition events always constitute part of the official program. We

were happy that we were able to provide trips to the Lednice Chateau complex and the Moravian Karst caves, as well as satisfaction for individual tastes, such as booking a ping-pong hall and a football pitch. With Harry Potter's help we were able to secure marvelous weather for the trip to Prague. However, we underestimated the demand for goods in the Puzzle Shop. After the invasion of the WPC participants, the owner dusted the shelves and closed down, as there was nothing left to sell. Everybody was hungry and exhausted after the trip to Prague and the party and accommodations in the S.E.N. Chateau hotel were much appreciated.

I received a large number of beautiful e-mails from participants after the 10th WPC championship (thank you very much for all of them) that allow me to believe that the competitors enjoyed their stay in the Czech Republic and that Brno provided good conditions and a suitable environment for the competitions, for the world congress assembly and for the entertaining cultural and social program. The jubilee 10th WPC, the first championship of the 21st century, is



← All participants and guests stayed in the excellent Holiday Inn hotel near the city centre. The competitions were held in the Congress Hall of the same hotel.



↑ Father Vita and daughter Hanka, both suffering WPC organizers syndrome: not enough sleep!



→ All chairs still in place before the final ceremony...

now a thing of the past. If it brought something new and contributed a little to the development of the international puzzle movement, it served its purpose.

In conclusion, I would like to thank the whole collective of people who helped me in the preparation of the wonderful event. If I wanted to be more specific and thank everybody individually, the list of friends would be very long indeed. However, there are three of them I have to name: my wife Ljubica, my daughter Hanka and my friend Zdenek Chromý.

← Vítězslav and his staff waiting for Zdenek (left to right): Vítězslav Koudelka, Mirka Dvorakova, Lubos Beranek, Ivana Kucerova, Ljubica Koudelkova, Petra Dvorakova, Hanka Koudelkova, Martin Mestaneck and Zdenka Obermajerova.



# Behind the Scenes of the 10th World Puzzle Championship

**The jubilee 10th World Puzzle Championship, the first in the 3<sup>rd</sup> millennium, has become history. It was a great experience for the organizers, for the authors of puzzles, and for both regular and new competitors. In 2001 the World Puzzle Championship returned to the Czech Republic, to Brno, after 8 years.**

↓ Zdenek and Vitezslav during question time. All introductions were handed out before competition for the puzzlers to ask questions about the night before the competition started.



Competitors looking at the standings and results in the hall right outside the competition hall. Behind the glass at the top left is the jury room.

**“Two and a half days of competition meant assembling more than 120 puzzles.”**

The preparations for the 10th championship started a few years ago by arranging and selecting some puzzles. The main credit for this goes to Jaroslav Muller, who created piles of new logical puzzles, but who didn't live to see the Brno championship. It occurred to us that the year 2001 offered a good opportunity to link the event to the famous novel by A. C. Clark, "2001: A Space Odyssey." That's why we subtitled the whole championship "2001: A Puzzle Odyssey" and that's why some of the puzzles were based on cosmic themes.

When preparing puzzles we were trying to keep to the propositions of the World Puzzle Congress (see Newsletter

2) so that the competition would include both easy and difficult puzzles, so that there would be puzzles with new components, and so that the proportion of logical, numerical, crossword, epistemic, and spatial puzzles is kept the same.

Two and a half days of the competition and the competition program meant we had to assemble more than 120 puzzles, the most in the history of the championship. However we had a good team of authors. We also used puzzles from national author competitions declared by Kira Publishing house. This is a very good experience that we can recommend to all the organizers. We tried to add a little example when possible, as some of the previous organizers did. We consider this point very important. Giving examples in the instructions should become a rule.

Approximately half a year before the championship we were working at maximum intensity. We had prepared 15 competition parts: 10 parts for the competition of individuals and 5 parts for the competition of teams.

We used several competition systems (some of them were used at the championship for the first time):

1. The main parts in 90-minute limits;
2. Screen Puzzles (we were inspired by WPC 1996 in Utrecht);
3. Sprint; then a series of 10 easier puzzles that were to be solved in a very short time (each solved puzzle was awarded an equal number of points);
4. Triads: individuals solve a triad of puzzles and the first ten solvers with the correct and complete solution is given points;
5. Short parts with bonuses for the fastest groups;
6. Theater: a little puzzle show testing memory and good orientation.

We selected the structure of individual parts in order to be manifold. All the puzzles were thoroughly checked and tested before the championship. More than 8 people were working with some of the puzzles in the preparatory stage. It was necessary to confirm the correctness and to set time limits for puzzling during that phase. It was very demanding and time-consuming work.

Nevertheless some of the puzzles, especially the epistemic ones, were discussed during the championship in Brno. One of the tasks, dealing with the history of the championship (initial letters of the cities where previous championships have been held), was in the end cancelled because it seemed unfair to new countries' teams. One question remains for the future: whether it would be better to cancel completely general knowledge puzzles or not. There have never been good experiences with these puzzles throughout the history of the championship. It is difficult to find acceptable limits for what is and what is not "general" knowledge.

It is necessary to mention one more part of work: evaluating the scores. Correctness of scores at WPC in Brno was checked by 9 assessors, who worked in threesomes: each solution was checked by three assessors. Three more assessors participated in further checking, in cooperation with PC service, and in solving protests. Four people provided the organizational backup for PC service permanently, but in total it was 7 people. This important team in the backstage consisted of 19 people. Some parts of the competition required the pres-



Puzzlers waiting for the action...

ence of more assessors and assistants right in the research auditorium. This system was very effective; it made it possible to release running scores in a very short time. The competitors liked the quick presentation of scores on the screen very much. Naturally this presentation had to be stopped before the end of competition of individuals because the mystery of overall scores was intended to be revealed at the final ceremony.

We must confess that the jury in Brno was very strict. But they always

proceeded absolutely uniformly. An incomplete solution couldn't be accepted in one case and not accepted in another case. I have met with suspicions of this type but I must call them unjustified. On the other hand, when the alternative solution was found to be possible (e.g. it exactly corresponds to assignment), it was considered correct.

Yes, the 10th World Puzzle Championship is history. I hope it has brought many stimuli and experiences for future organizers. And its evaluation lies above all on the competitors themselves.

Zdenek in the jury room.

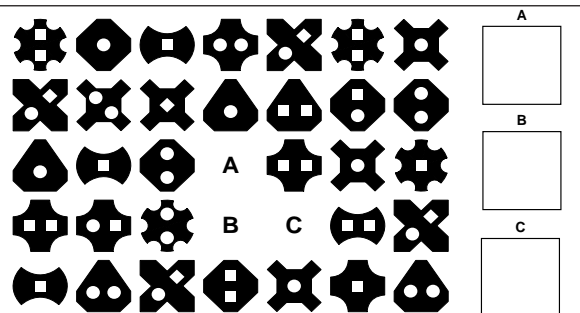


# Selected Puzzles from the 10th WPC

**Altogether 125 puzzles (159 puzzles including their variations) were prepared for participants of the 10th World Puzzle Championship 2001 in Brno. Of these, there were some new types of puzzles that I want to feature here. The puzzles were arranged into 10 parts for the individual competition and 5 parts for the team competition. We have selected several puzzles for this Newsletter to be specially remembered in this top world puzzle event.**

## Part 1

Part 1 was inspired by the cosmic theme in Arthur C. Clarke's '2001: A Space Odyssey.' It consists of 12 specially created puzzles. The tasks were arranged in classical form - as a potpourri with a time limit of 90 minutes. This first meeting of competitors and 'extra-terrestrials' was the pleasurable beginning of our puzzle marathon. Let me introduce one of the many many puzzles of our unforgettable friend Jaroslav Müller. He was very active in the organizers' team until the year of WPC, and he prepared plenty of fine original puzzles for the competition. Several months before WPC he left us forever. But the 10th championship in Brno was his championship. Thank you, Jaroslav.

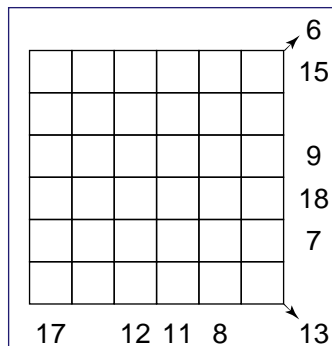


**Lost Symbols, by Jaroslav Müller**

Three missing symbols are the key for communication with an extraterrestrial civilization. ET's left a chart with a group of 35 symbols, three of which are left out. This grouping is not coincidental. Certain rules are observed which you must discover. Draw the three lost symbols.

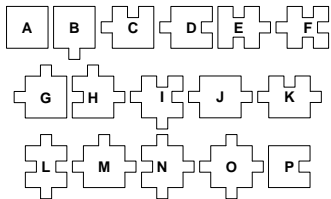
## Part 2

The beginning phase is over and now competitors go into the optimum puzzle atmosphere. It is too soon for fatigue and that means the second part of the competition can be harder than the first one. Thirteen logical and mathematical puzzles are prepared for solving. Time limit is 90 minutes and we believe it is enough for the best solvers. But maybe the time limit is an enemy for some people. The first serious differentiation of solvers is beginning.



**Antimagic Square, by Frantisek Luskac**

Place numbers 1 to 12 (each just once) in a 6 x 6 square so that on each line, in each column and on both main diagonals, there are always two different numbers, their totals varying between 6 and 19, and each is different. Some of the totals are marked at the sides. Fill in the missing numbers in the diagram and on the sides.

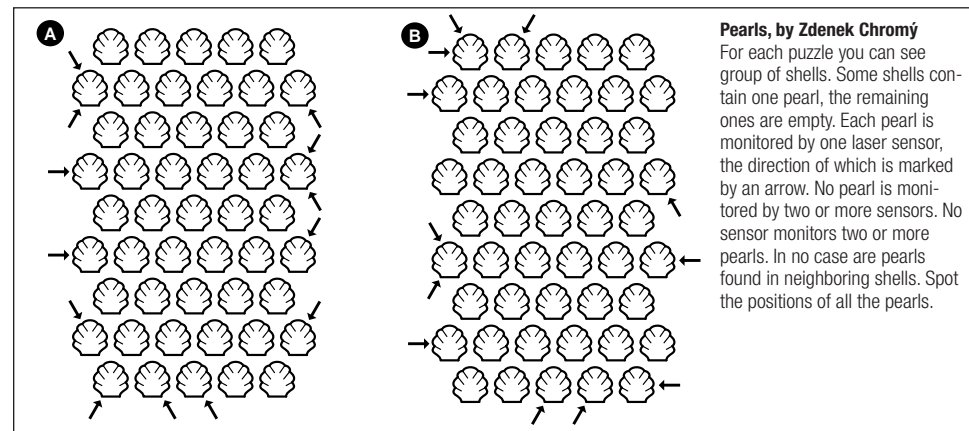


**Letter Puzzle, by Jaroslav Müller**

Put all the parts of the letter puzzle into the correct places in the diagram. One part is already in place. The parts cannot be rotated or turned over.

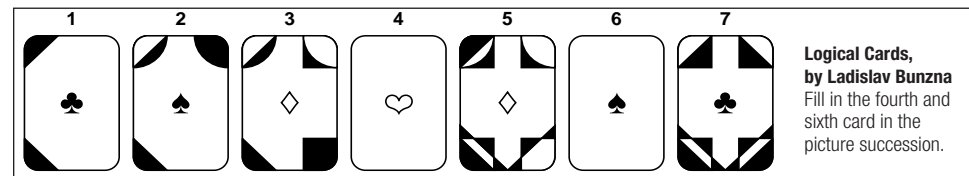
## Part 3

Part 3, not so hard as Part 2, was a mixture of different types of puzzles. Pearls, we might say, that were enjoyed by the solvers. This puzzle is based on a theme by Jaroslav Müller and it is not well-known abroad. But in the Czech Republic it is a very popular puzzle, especially with children, who like it perhaps too much. Another puzzle called Logical Cards is based on the overlapping and rotating of symbols. This puzzle (and some others too) was obtained from the Czech competition of puzzle designers organized by Kira and the Czech Puzzle Union.



**Pearls, by Zdenek Chromý**

For each puzzle you can see group of shells. Some shells contain one pearl, the remaining ones are empty. Each pearl is monitored by one laser sensor, the direction of which is marked by an arrow. No pearl is monitored by two or more sensors. No sensor monitors two or more pearls. In no case are pearls found in neighboring shells. Spot the positions of all the pearls.

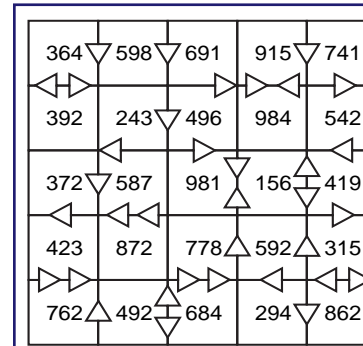


**Logical Cards, by Ladislav Bunzna**

Fill in the fourth and sixth card in the picture succession.

## Part 4 - Sprint

A new, and we hope, interesting system of competition appeared in Part 4. We called this part Sprint. The task was to solve 10 very easy puzzles in a very short time - 12 minutes. The solver won points according to the number of puzzles successfully solved.



**From Distant China, by Martin Postranecky**

Place two independent shapes in their correct positions in the diagram. The shapes can be turned, but not mirror-fashion. Write down the numbers inside the shapes and add them. You will obtain a number that is also a significant year in the history of China.



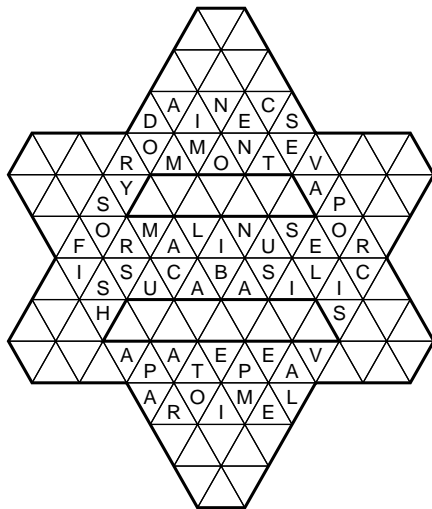
## Part 5 - Triads

Part 5 was called Triads. The individual speed of solving was important for success. A triad is a collection of three relatively easy tasks. All tasks must be solved completely. The first ten competitors with correct solutions win the points (from 30 to 3); other puzzlers unfortunately don't. A similar system is known in the Czech Republic, but it is in a new form for WPC. We prepared three triads. There was very hard fighting between competitors and very hard work for the judges.



**The Star, by Vítězslav Koudelka**

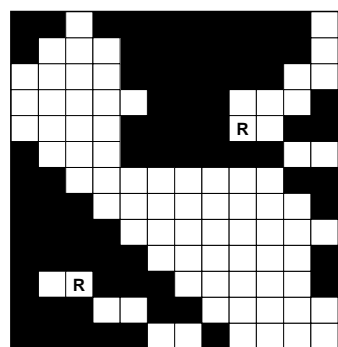
Put all the words from the given list into the star diagram in six directions. Some letters have already been entered. Each triangle contains one letter. In the bold-framed parts within the star you find the theme - the name of a personality known all over the world. Also search out the symmetrically hidden password in the diagram (6 letters) which is related to the theme.



- ABACUS
  - ABONENT
  - ANAPA
  - BASILICA
  - CALCIO
  - CARLA
  - ESCORT
  - FILLET
  - FORMALIN
  - IANUS
  - LABRADOR
  - LEOPARD
  - LIMPET
  - LISTER
  - MINOR
  - MONTEVERDI
  - MORAVIA
  - NANTES
  - NARCIS
  - OILER
  - OTAVA
- OTERO
  - PACKET
  - PAPARAZZI
  - SELFISH
  - SHAKE
  - SOAVE
  - TEMPERA
  - ULYSSES
  - VALET
  - VIERA
  - VITIS

**Part 6**

After a pleasurable night, the competitors started to solve interesting (we hope) puzzles, time limit 90 minutes. Unfortunately, it is not possible to publish them all in these Newsletter pages. And so we introduce only two puzzles from this part: the special combination puzzle called Days and Corners, which is a logical matrix. Here they are.

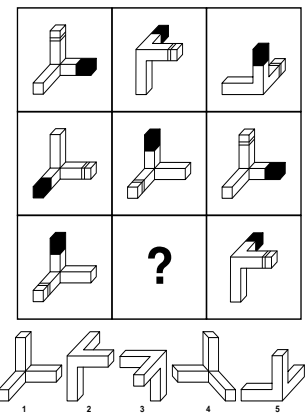


**Days, by Pavel Matejcek**

The days of the week in English are MONDAY, TUESDAY, WEDNESDAY, THURSDAY, FRIDAY, SATURDAY and SUNDAY. Enter these days in the chart. They should be written on lines one after the other; however, they do not have to be in calendar succession. Each day must appear in the chart at least once. No square can be left empty. The same letter cannot appear more than once in the lines and columns. Help: two letters have already been entered in the chart.

**Corners, by Milan Prager**

Fill the right corner in the place of a question mark. First select the right shape and position of the corner and inside it mark the black and lined part in the correct position.



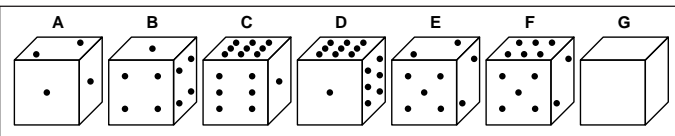
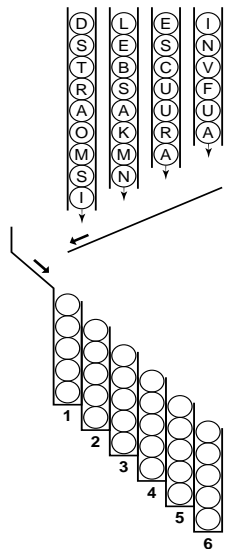
**Part 7**

Puzzlers' morning is a hard one. In Brno, the puzzlers' morning offered a mixture of various types of puzzles. A further (three-dimensional) variant of Battleships appeared at the WPC.

**Nobel Balls, by Zdenek Chromý**

From four magazines with a total of 30 balls, individual balls with letters will fall. Each ball will slide down the sloping planes to slot into the first free vertical column (1). When the column is completely filled with 5 balls, the next five balls will fall into the second column (2), etc. You systematically fill all 6 columns. The balls must be released from the magazines in such an order that one name of a Nobel Prize winner can be read in each column from the top downwards. You select six correct names from the list of 20 winners. One important rule must be observed: two or more balls must not be released from the same magazine immediately after one another.

- |       |       |       |
|-------|-------|-------|
| ASTON | DIRAC | MINOT |
| BASOV | ELIOT | RAMAN |
| BRAUN | ERNST | RUSKA |
| BUNIN | FERMI | SALAM |
| CAMUS | FUKUI | SIMON |
| CURIE | FRANK | STERN |
| DIELS | KREBS |       |

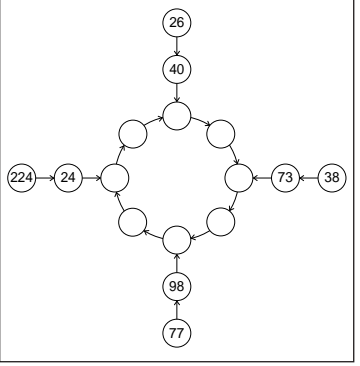


**Strange Cubes, by Vladimir Melkes**

Fill in the points in the G cube so that the logic of the whole line is observed.

**Carousel, by Pavel Matejcek**

Fill in all the numbers on the carousel. The same rules apply in the whole system.



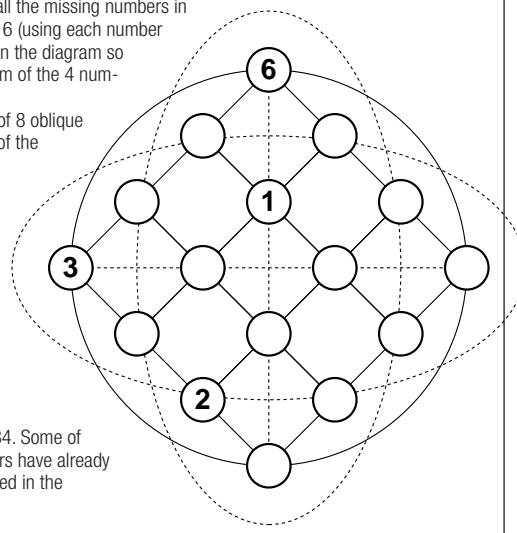
**Part 8**

A similar potpourri as Part 7 and the last 'great block' (90 minutes) in the individual competition. Let me introduce a small sample: numerical/logical task Magic Atomium. Its designer is Vlastimil Danek, a member of the authors' team, who is 78 (!) years old. Mr. Danek is a specialist of mathematical and magic puzzles.

**Magic Atomium, by Vlastimil Danek**

Complete all the missing numbers in lines 1 to 16 (using each number just once) in the diagram so that the sum of the 4 numbers:

- on each of 8 oblique abscissas of the diagram,
- on its 2 marked diagonals,
- on the perimeters of all its 9 squares,
- on the circle,
- on two ellipses is always 34. Some of the numbers have already been entered in the diagram.



**Part 9 - Screen Puzzles**

When we visited WPC in Utrecht (1996), we very much enjoyed so-called 'screen puzzles.' Now we decided to use this form of puzzling in WPC 2001. We had a good opportunity in Congress Hall of the Holiday Inn hotel, where two big screens were installed. Each of the fourteen puzzles was shown by using a computer, for a short time (from several seconds to two minutes maximally). Solvers could see the time on the diagram. There was a pause of 10 seconds between tasks. This part was very interesting not only for competitors, but also (as we could see) for visitors. Applause was very pleasurable for us.



**Part 10 - Theater**

The second day of the individual competition has ended and so now is the time for jokes. A puzzle theater is beginning. The Fashion puzzle caught the attention of the solvers. A group of young assistants wearing very strange clothes walked among the competitors sitting in the room. Puzzlers had to remember as many details as possible of their clothes. In the puzzle hints, different things were shown and the task was to determine the name of the country that was indicated. The third puzzle of this part was *Moving Signatures*. All puzzlers had to watch very carefully a 'moving bag' with a signed list on paper. And it was the last task in the individual competition.

See photo on the next page.

### Part 11

The last part of the second day is always the first part only for teams. This part consisted of an interesting new type of folding puzzle by Vaclav Obsivac. It must be said that there are not so many creators of folding puzzles and construction kits in the Czech Republic.



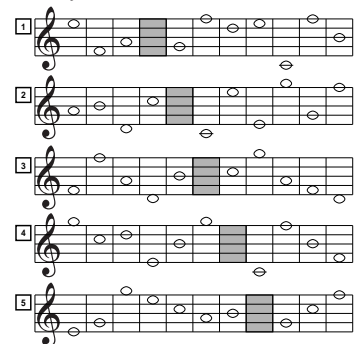
Delia Keetman (The Netherlands) solving the folding puzzle.

### Part 12

45 minutes for a team competition - it was Part 12 with 12 very hard puzzles. One puzzle (Missing Letter) had to be cancelled because of its 'non-general knowledge' (names and initials of the cities of WPC). This was very disappointing to us. But several puzzles with interesting ideas (e.g. crossing progressions) appeared.

#### Quintet, by Pavel Matejcek

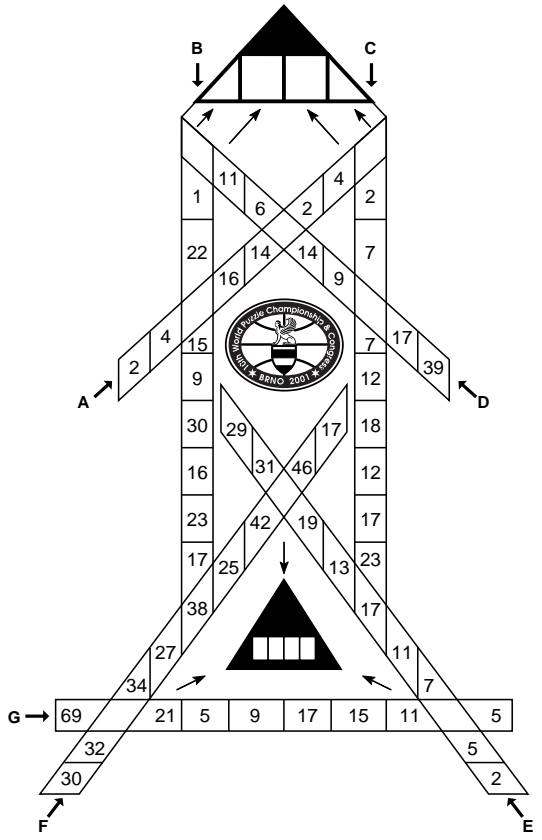
In the picture is a logical score for five voices that does not require any musical knowledge. The gentlemen AURoux, BUTLER, OSHER, ROEST and SHORTZ took their parts (1 to 5) and sang. Match the individual logical 'parts' with the singers and write the venue of the concert, which you may obtain by completing the missing notes. Clue: The drawn 'notes' correspond with letters, but at the same time they correspond with numbers which maintain a certain system within the individual vertical columns.



Moving Signatures (Theater). All puzzlers had to watch very carefully a 'moving bag' with a signed list on paper.

#### The Final Countdown, by Pavel Matejcek

A puzzle rocket is setting out on its last journey. Now it remains to put numbers in the empty places where progressions cross. After that, enter a four-digit number into the bottom triangle and enter the theme into the top of the rocket. This message will help you to find the hidden word: SPELL YOUR PUZZLES.

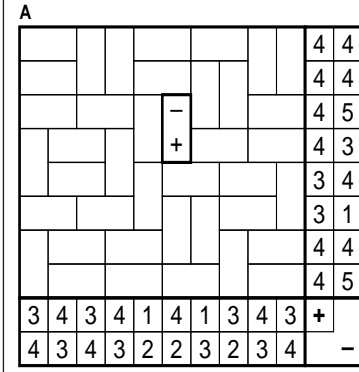


### Part 13

Six puzzles of the same type (Magnets) were solved by teams in the time limit of 30 minutes. The first seven teams with the right and complete solution won point bonuses.

#### Magnets, by Jaroslav Müller

The square is made up of magnetic and non-magnetic plates. Each magnetic plate has two halves: positive (+) and negative (-). The halves of the magnetic plates with the same charge cannot border on any side, as they repel each other. However, their corners can touch. The numbers of positive and negative charges in each line and column are marked. One magnetic plate has already been placed in the diagram. Non-magnetic insulation plates are as big as the magnetic ones and are to be marked in black. What is the position of all magnetic plates in the diagram?



### Part 15

The last part of the 10th World Puzzle Championship. And the task was to solve a special construction kit that was like a space variant of Japanese tangrams.

And that is all, exclusively for the Newsletter. I hope that everyone enjoyed these presented puzzles as much as I did. I wanted to introduce to you most of our puzzle designers and I hope that Czech authors represent a high level for the World Puzzle Championships.

Solutions on page 28.

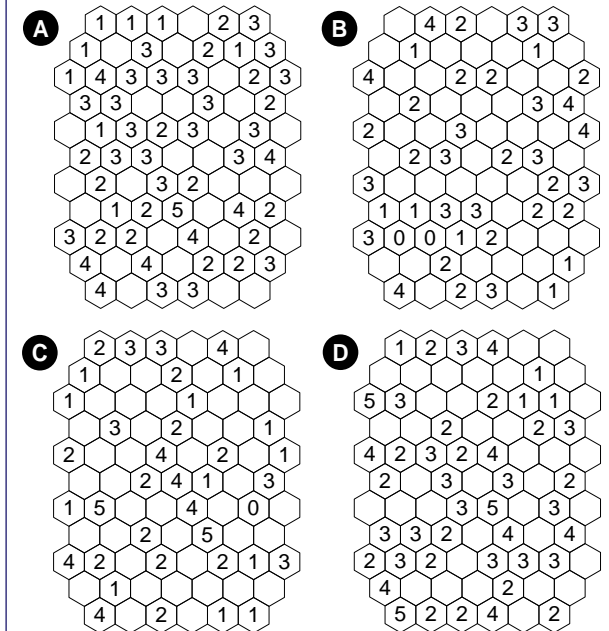
→ Team Belgium during part 15. From left to right: Bart Leemans, Sebastien Leroy, Philippe Niederkorn and Claude Desset.

### Part 14

Four puzzles called A Path Between Cells were solved in the time limit of 20 minutes. Bonuses were given as in Part 13.

#### A Path Between Cells, by Jaroslav Müller

Each puzzle is a network consisting of hexagonal cells resembling honeycombs. Draw one zigzag line (a route) bounding a whole closed area. You are only allowed to move within the network drawn, i.e. on the perimeters of the hexagons. The number within a given cell indicates the number of the sides of the particular cell that are part of the route. Mark these sides with a bold line so that they make up the desired route.





## Team Results

#	team	points	11	12	13	14	15	11-15	puzzler 1	puzzler 2	puzzler 3	puzzler 4				
1	USA	6266	100	700	180	55	120	1155	HUANG Wei-Hwa	1327	BUTLER Zack	1344	OSHER Ron	1239	BARKAN Roger	1201
2	CZE A	5880	115	690	190	0	120	1115	BABILON Robert	1454	NEPOVIM Petr	1256	KALHOUS Pavel	1212	MAREK Dan	843
3	BEL	5672	25	640	200	130	120	1115	LEEMANS Bart	1065	DESSET Claude	1187	LEROY S.	1249	NIEDERKORN P.	1056
4	NED	5615	50	720	125	0	90	985	KEETMAN Delia	1114	ROEST Niels	1321	BEELEN Jan	894	PEETERS Tim	1301
5	GER	5488	175	710	165	35	90	1175	PRULL-ADEN Gerd	734	GEGENHEIMER M.	952	VOIGT Ulrich	1469	LEY Michael	1158
6	FRA	5032	200	490	150	55	60	955	CASSAIGNE Julien	1058	NOVELLI J.-Christ.	922	MARTIN Francois	923	AUROUX Denis	1174
7	HUN A	4953	125	540	125	20	30	840	MARKOS Ede	949	MÓCSY Miklós	1077	NÉMETH Zoltán	1070	OSVALT László	1017
8	POL	4798	50	520	125	55	90	840	IGNACIUK Grzegorz	1134	KRAJEWSKI T.	933	BORNY Michal	1144	KASZKURSKA E.	747
9	TUR A	4697	125	640	125	55	120	1065	ALYANAKYAN Kamer	1032	BALCI Metin	845	ÓZAY Necmiye	890	ABACIOGLU Umit	865
10	ROM	4406	105	480	170	35	60	850	BERNÁT B.-László	834	SZÓKE Alexandru	987	BOLOTA Andreas	936	LŐRINCZ Emeric	799
11	UKR	4364	50	570	125	35	120	900	FISHELEV Serhij	772	KASSABLI Georgij	1076	GRABARCHUK P.	820	PODSHYVALOV S.	796
12	CAN	4332	75	660	160	20	30	945	WETMILLER John	813	KISMAN Derek	1242	McHAFFIE N.	719	SUCHANEK Jan	613
13	HUN B	4235	75	340	125	35	120	695	HORVÁTH Zoltán	725	NÉMETH Ildikó	793	TIRINGER Zoltán	977	CSIZMAZIA T.	1045
14	CZE B	4208	50	560	125	35	90	860	VEJCHODA Petr	707	VODIĚKA Zdenik	873	TYLOVÁ Jana	874	HENC Karel	894
15	SVK	4199	95	510	100	40	90	835	TIBENSKÝ Pavol	795	S'ATKA Milan	942	CHUDÝ Milan	890	FARKAŠ Ján	737
16	RUS A	4187	50	400	100	35	120	705	PANKRATOV A.	787	OLESHOV Alexey	909	TREMBIA Andrei	840	GRISHCHENKO I.	946
17	GBR	3958	100	410	75	0	60	645	DELLER Nick	892	DICKSON Chris	775	WILSHIRE Ken	727	GARDNER Nick	919
18	HUN C	3939	75	360	125	55	30	645	MÉRŐ László	891	CSEREKLYEI D.	877	NAGY László	741	NAGY Péter	785
19	FIN	3646	75	310	155	35	90	665	SARAKONTU Liisa	665	IKÄHEIMONEN P.	1114	VANHANEN H. M	369	HYVÖNEN Juha	709
20	RUS B	3600	85	290	125	0	30	530	KHANMAGOMEDOV R.	632	ZAIDELMAN Y.	829	LEONTIEVA Olga	717	KNOP Konstantin	892
21	UN 1	3302	125	480	150	15	60	830	KURCHAN Rodolfo	697	SIBONA Gustavo	765	LUETHI Christian	455	REINER Beatrice	555
22	BUL	3212	140	260	100	20	90	610	ALEXANDROV Boyan	494	BENEV George	775	TRIFONOV Stefan	404	RAZSADOV Deyan	929
23	UN 2	3010	130	450	100	0	30	710	HEYNISCH Manfred	479	KRESZ Károly	573	SZABÓ Gábor	881	SÓNMEZ Eylem	367
24	TUR B	2960	100	290	75	20	0	485	DILBER Volkan	724	ORSEL Metin	817	ARICAN Kerim	548	ARIKAN Ekrem	386
25	CRO	2918	25	280	100	20	30	455	IVANKOV Alfredo	597	SIMANOVIC R.	629	NAZANSKY Boris	420	PAVICIC Luka	817
26	KOR	2194	0	230	25	20	30	305	OH Junseok	444	HAN Seungkyu	434	LEE Sunhee	35	KWAK Seungjae	976
27	UN 3	1672	25	590	75	40	60	790	VAN HOOVE. Guy	882	x	0	x	0	x	0



### Argentina

← From left to right: Jaime Poniachik (captain), Nina Poniachik (guest), Rodolfo Kurchan and Gustavo Sibona.

↓ From left to right: Guy Van Hooveld, Claude Desset, Philippe Niederkorn, Bart Leemans and Sebastien Leroy.



### Canada

↑ From left to right: Nicholas McHaffie, Jan Suchanek, Stanley Newman (captain), John Wetmiller and Derek Kisman.

↓ From left to right: Pero Galogaza (captain), Alfredo Ivankov, Robert Simanovic, Luka Pavicic, Boris Nazansky and Valter Kvalic (guest).



### Croatia

### Belgium, 3<sup>rd</sup> Place



### Bulgaria

← From left to right: Stefan Trifonov, Boyan Alexandrov, Rossy Alexieva (captain), Deyan Razsadov and George Benev.

## Individual Results

#	name	team	1	2	3	4	5	6	7	8	9	10	points	#	name	team	1	2	3	4	5	6	7	8	9	10	points
1	VOIGT Ulrich	GER	245	155	175	100	0	250	235	215	70	24	1469	14	AUROUX Denis	FRA	160	120	190	50	0	195	195	175	65	24	1174
2	BABILON Robert	CZE A	225	245	205	80	21	175	223	190	70	20	1454	15	LEY Michael	GER	175	140	145	100	21	145	185	175	60	12	1158
3	BUTLER Zack	USA	205	150	205	80	0	225	205	190	60	24	1344	16	BORNY Michal	POL	180	90	175	80	0	155	200	185	55	24	1144
4	HUANG Wei-Hwa	USA	245	165	160	80	0	230	170	195	70	12	1327	17	IGNACIUK Grzegorz	POL	145	140	145	80	9	165	151	215	60	24	1134
5	ROEST Niels	NED	195	150	155	80	36	235	168	215	65	22	1321	18	KEETMAN Delia	NED	110	155	115	100	27	180	170	180	55	22	1114
6	PEETERS Tim	NED	245	120	175	100	27	215	190	170	45	14	1301	19	IKÄHEIMONEN P.	FIN	165	100	145	80	0	190	150	195	65	24	1114
7	NEPOVIM Petr	CZE A	135	195	170	80	24	180	170	215	65	22	1256	20	MÓCSY Miklós	HUN A	170	105	100	50	0	165	188	205	70	24	1077
8	LEROY Sebastian	BEL	190	120	160	80	0	220	205	180	70	24	1249	21	KASSABLI Georgij	UKR	160	110	155	40	24	165	170	180	50	22	1076
9	KISMAN Derek	CAN	200	165	135	60	0	210	175	215	60	22	1242	22	NÉMETH Zoltán	HUN A	110	115	150	50	0	170	210	200	45	20	1070
10	OSHER Ron	USA	225	155	145	60	27	190	170	175	70	22	1239	23	LEEMANS Bart	BEL	190	125	145	60	0	165	169	130	60	22	1065
11	KALHOUS Pavel	CZE A	190	150	100	60	42	180	215	190	65	20	1212	24	CASSAIGNE Julien	FRA	155	105	110	50	9	175	185	190	65	14	1058
12	BARKAN Roger	USA	205	120	85	80	12	210	205	215	55	14	1201	25	NIEDERKORN P.	BEL	140	155	110	60	9	145	188	180	45	24	1056
13	DESSET Claude	BEL	175	140	170	50	12	170	210	175	65	20	1187	26	CSIZMAZIA Tamás	HUN B	140	120	115	80	0	155	173	185	55	22	1045

Left to right: Ulrich Voigt (Germany), 1st place - Robert Babilon (Czech Republic), 2nd place - Zack Butler (USA), 3rd place.



→ From left to right: Vladimir Jemelik (captain), Dan Marek, Pavel Kalhous, Petr Nepovim and Robert Babilon.

### Czech Republic, 2<sup>nd</sup> Place



### Finland

→ From left to right: Julien Cassaigne, Denis Auroux, François Martin and Jean-Christophe Novelli.



### France



### Germany

↑ From left to right: Ulrich Voigt, Markus Gegenheimer, Gerd Prull-Aden, (guest), Andreas Franz (captain) and Michael Ley.



↑ From left to right: György István (captain), Miklós Mócsy, László Osvalt, Zoltán Németh and Ede Markos.



## Individual Results

#	name	team	1	2	3	4	5	6	7	8	9	10	points	#	name	team	1	2	3	4	5	6	7	8	9	10	points
27	ALYANAKYAN Kamer	TUR A	115	110	140	80	18	125	155	210	55	24	1032	47	MÉRŐ László	HUN C	150	65	120	50	0	150	164	150	30	12	891
28	OSVÁLT László	HUN A	210	95	115	40	30	115	190	160	40	22	1017	48	ÖZAY Necmiye	TUR A	120	130	110	40	3	135	155	115	60	22	890
29	SZÓKE Alexandru	ROM	165	105	135	40	0	120	190	160	50	22	987	49	CHUDÝ Milan	SVK	100	85	140	60	6	90	205	135	45	24	890
30	TIRINGER Zoltán	HUN B	125	115	135	50	18	110	150	210	40	24	977	50	VAN HOOVE Guy	UN 3	150	125	95	50	0	130	150	105	55	22	882
31	KWAK Seungjae	KOR	60	115	120	15	21	190	215	180	60	0	976	51	SZABÓ Gábor	UN 2	125	90	105	40	12	175	130	140	40	24	881
32	GEGENHEIMER M.	GER	150	100	105	80	18	110	190	130	45	24	952	52	CSEREKLYEI Dániel	HUN C	115	105	130	30	0	150	125	150	50	22	877
33	MARKOS Ede	HUN A	145	115	125	50	27	140	150	135	40	22	949	53	TYLOVÁ Jana	CZE B	130	105	130	50	15	150	135	85	70	4	874
34	GRISHCHENKO Ivan	RUS A	155	120	120	40	0	150	129	180	40	12	946	54	VODIÉKA Zdenik	CZE B	190	120	105	50	0	155	99	85	45	24	873
35	SÁTKA Milan	SVK	160	90	145	30	0	165	165	105	60	22	942	55	ABACIOGLU Ümit	TUR A	155	155	85	20	0	135	133	130	30	22	865
36	BOLOTA Andreas	ROM	115	105	115	60	18	135	146	170	50	22	936	56	BALCI Metin	TUR A	85	160	75	30	0	105	140	195	35	20	845
37	KRAJEWski Tomasz	POL	175	90	65	60	0	160	146	175	50	12	933	57	MAREK Dan	CZE A	150	100	90	30	0	130	116	150	55	22	843
38	RAZADOV Deyan	BUL	140	130	80	60	0	110	185	145	55	24	929	58	TREMBÁ Andrei	RUS A	140	70	150	20	0	115	150	150	35	10	840
39	MARTIN Francois	FRA	120	115	120	40	6	150	170	145	35	22	923	59	BERNÁT B.-László	ROM	140	75	100	30	0	145	130	135	55	24	834
40	NOVELLU J.-Christ.	FRA	130	115	50	60	3	155	175	170	50	14	922	60	ZAIDELMAN Yakov	RUS B	105	95	95	20	0	145	190	120	35	24	829
41	GARDNER Nick	GBR	105	95	100	60	0	120	200	155	60	24	919	61	GRABARCHUK Petro	UKR	85	125	95	20	0	150	130	170	35	10	820
42	OLESHOV Alexey	RUS A	170	105	115	30	15	120	170	130	30	24	909	62	PAVICIC Luka	CRO	120	80	110	30	0	135	135	160	35	12	817
43	HENC Karel	CZE B	95	115	115	50	0	110	190	150	45	24	894	63	ORSEL Metin	TUR B	110	150	90	60	0	115	95	140	35	22	817
44	BEELLEN Jan	NED	160	120	140	20	0	105	140	160	25	24	894	64	WETMILLER John	CAN	155	75	95	20	0	180	106	120	40	22	813
45	DELLER Nick	GBR	105	40	140	50	30	120	165	150	70	22	892	65	LÖRINCZ Emeric	ROM	115	60	110	40	0	105	170	125	50	24	799
46	KNOP Konstantin	RUS B	90	95	80	30	0	185	205	125	60	22	892	66	PODŠYVALOV S.	UKR	120	75	140	30	0	100	99	165	45	22	796

→ From left to right: Tetsuya Nishio, Tetsuya Nishio, Tetsuya Nishio, Tetsuya Nishio (captain) and Tetsuya Nishio.



Japan

### Korea



↑ From left to right: Sunhee Lee, Junseok Oh, Jubong Park (captain), Seungjae Kwak and Seungkyu Han.

### Poland



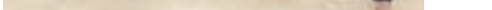
← From left to right: Eliza Kaszkurska, Adam Sumera (captain), Michal Borny, Grzegorz Ignaciuk and Tomasz Krajewski.

### Romania



↑ From left to right: Bernat Bárna-László, Emeric Lörincz (playing captain), Alexandru Szóke and Andreas Bolota.

### Russia



← From left to right: Riad Khanmagomedov, Alexander Pankratov, Olga Leontieva, Yakov Zaidelman, Andrei Tremba, Konstantin Knop, Ivan Grishchenko and Alexey Oleshov.



Slovakia

↑ From left to right: Ján Farkaš, Pavol Tibenský, Sona Jánošíková (captain), Milan Chudý and Milan Sátka.

## Individual Results

#	name	team	1	2	3	4	5	6	7	8	9	10	points	#	name	team	1	2	3	4	5	6	7	8	9	10	points
67	TIBENSKY Pavol	SVK	120	45	95	15	0	150	160	135	55	20	795	87	KURCHAN Rodolfo	UN 1	135	40	70	20	0	100	98	185	25	24	697
68	NÉMETH Ildikó	HUN B	125	60	80	30	0	140	168	115	55	20	793	88	KHANMAGOMEDOV R.	RUS B	50	60	105	60	0	105	125	80	35	12	632
69	SARAKONTU Liisa	FIN	135	50	115	50	0	90	170	105	50	24	789	89	SIMANOVIC Robert	CRO	75	105	75	30	0	75	140	75	30	24	629
70	PANKRATOV A.	RUS A	80	105	95	50	0	110	115	160	50	22	787	90	SUCHANEK Jan	CAN	95	55	55	15	0	90	131	95	55	22	613
71	NAGY Péter	HUN C	135	75	95	20	0	125	131	140	40	24	785	91	IVANKOV Alfredo	CRO	95	65	125	5	0	110	103	65	15	14	597
72	DICKSON Chris	GBR	120	105	55	60	0	100	151	95	65	24	775	92	KRESZ Károly	UN 2	100	75	70	40	0	150	138	0	0	573	
73	REINER George	BUL	140	120	40	20	0	110	76	205	40	24	775	93	REINER Beatrice	UN 1	100	30	80	15	0	85	78	105	40	22	555
74	FISHELEV Serhiy	UKR	130	75	130	30	0	135	160	55	45	12	772	94	ARICAN Kerim	TUR B	55	60	65	20	0	70	88	125	45	20	548
75	SIBONA Gustavo	UN 1	140	40	100	50	0	145	108	115	45	22	765	95	ALEXANDROV B.	BUL	60	65	55	15	0	55	80	105	45	14	494
76	KASZKURSKA Eliza	POL	80	90	95	30	0	100	150	140	50	12	747	96	HEYNSCH Manfred	UN 2	50	40	45	30	0	95	70	110	35	4	479
77	NAGY László	HUN C	170	60	95	20	0	125	79	130	40	22	741	97	LUETHI Christian	UN 1	55	45	65	15	0	45	100	85	25	20	455
78	FARKAS Ján	SVK	145	50	140	20	0	120	120	55	65	22	737	98	OH Junseok	KOR	60	35	45	5	0	65	80	105	35	14	444
79	FRULL-ADEN Gerd	GER	100	85	105	30	0	85	112	160	35	22	734	99	HAN Seungkyu	KOR	15	35	45	40	0	35	120	85	45	14	434
80	WILSHIRE Ken	GBR	105	100	75	30	0	90	130	130	45	22	727	100	NAZANSKY Boris	CRO	105	15	55	10	0	25	120	50	30	10	420
81	HORVÁTH Zoltán	HUN B	90	95	160	15	0	60	118	135	40	12	725	101	TRIFONOV Stefan	UKR	30	30	60	5	0	65	65	110	25	24	404
82	DILBER Volkan	TUR B	65	75	50	50	0	150	130	130	50	24	724	102	ARIKAN Ekrem	TUR B	45	75	55	15	0	35	74	45	20	22	386
83	McHAFFIE Nicholas	CAN	125	70	45	60	0	70	147	130	50	22	719	103	VANHANEN Heijä M.	FIN	45	0	55	15	0	15	65	125	25	24	369
84	LEONTIEVA Olga	RUS B	100	60	110	50	0	90	133	105	45	24	717	104	SÖNMEZ Eylem	UN 2	0	35	55	30	0	10	130	70	15	22	367
85	HYVÖNEN Juha	FIN	105	65	105	40	0	80	120	110	60	24	709	105	LEE Sunhee	KOR	0	0	30	5	0	0	0	0	0	0	35
86	VEJCHODA Petr	CZE B	110	80	75	50	0	120	103	120	35	14	707														

→ From left to right: Mark Stenzler and Christian Luethi.



Switzerland

→ From left to right: Serhiy Grabarchuk (captain), Petro Grabarchuk, Georgij Kassabli, Serhiy Podshyvalov and Serhiy Fishelev.

↓ From left to right: Delia Keetman, Jan Lam (guest), Jan Beelen, Tim Peeters, Hans Eendebak (captain) and Niels Roest.

### The Netherlands



→ From left to right: Kamer Alyanakyán, Hüsnü Sincar (captain), Metin Balci, Necmiye Özyay and Ümit Abacioglu.



Turkey



Ukraine

↓ From left to right: Ken Wilshire, Nick Deller, Peter Ritmeester (Captain), Nick Gardner and Chris Dickson.

### United Kingdom



↓ From left to right: Nick Baxter (Captain), Ron Osher, Wei-Hwa Huang, Zack Butler and Roger Barkan.

### USA, 1<sup>st</sup> Place





# REPORT ON THE 3<sup>RD</sup> GENERAL ASSEMBLY OF THE WORLD PUZZLE FEDERATION

Brno, Czech Republic, October 10, 2001

The meeting was called to order by chairman Will Shortz (USA) at 10:05. Board members present were Peter Ritmeester, general secretary (Netherlands); Rob Geensen, treasurer (Netherlands); Erja Gullstén (Finland); Vítězslav Koudelka (Czech Republic); and Will Shortz (USA).

The WPF member countries present were: Argentina, Belgium, Bulgaria, Croatia, Czech Republic, Finland, Germany, Hungary, Korea, Netherlands, Poland, Slovakia, Switzerland, Turkey, Ukraine, and United States. France was represented by Peter de Hen of Belgium. Observers attended from Japan. The meeting was held in two sessions over the morning and afternoon.

Will opened the meeting by welcoming the participants. The delegates introduced themselves and identified the organizations they represent. Especially welcomed were the new members from Bulgaria (Mensa Bulgaria, represented by Rossy Alexieva) and Switzerland (the Swiss Puzzle Federation, represented by Mark Stenzler). Also a special welcome went to Jubong Park, representing Korea on behalf of Puzzleland Co. and present for the first time at a WPC.

The minutes of the 2nd General Assembly of the WPF (Stamford, USA), as printed in the World Puzzle Newsletter #6 (pages 22-25), were approved.

## Reports of the board

### a) Logo

Peter Ritmeester recapped the development and adoption of the WPF logo, as explained in the recent Newsletter (pages 2-3).

Peter said that for official documents and the WPF website, the logo will be presented in green, but members may use the logo in another color if they have a good reason to do so.

Serhiy Grabarchuk (Ukraine) asked about other forms in which the logo may be used: black-and-white (instead of color), light letters on a dark background (instead of dark letters on a light background), in three dimensions, or with the block elements



**“On behalf of the WPF, Will thanked Vítězslav and his associates for an exceptionally fine and well-run WPC. Vítězslav was enthusiastically applauded.”**

stacked in a 3x2 or 2x3 arrangement (instead of in a straight line). Peter said that all these forms could be acceptable. Before these or other forms are used, though, the WPF office should be consulted for an official version of the format.

Peter reported that international registration of the logo is too expensive for the WPF at this time. He is finalizing a contract by which the designer of the logo will transfer the rights to it to the WPF.

The new website of the WPF. The design is by Michael Douma, who also designed the WPF logo. Webmaster and editor is Peter Ritmeester.



### b) Newsletter

Peter discussed the WPF newsletter and his intention to publish two new issues before the next World Puzzle Championship. He asked members to send him articles, news items, and photographs. The deadline for the next issue is January 15, 2002. Polished English is not required for text; all articles will be copyedited and, if the authors request, returned to the authors for approval before publication. For pictures, digital photos are preferred (1600 x 1200 pixels), but standard photos are acceptable as well.

### c) Website

Next Peter reported on the new WPF website ([www.worldpuzzle.org](http://www.worldpuzzle.org)) with news and information on the WPF and reports, results, and photos from the WPC. Additionally, the site features a forum on which puzzlers can present news, discussion, and puzzles to solve.

Serhiy asked if a single email address can be created by which WPF members can contact all other members at once. Peter said he would handle this. Hüsnü Sincar (Turkey) offered to help. Peter said this address should be used sparingly, though, to avoid cluttering members' mailboxes.

Peter was thanked and applauded for his work on the website.

### d) Finances

Rob Geensen handed out a WPF financial report. He pointed out that the WPF has incurred a number of expenses during the past year that are not yet paid, so the organization is not as financially well-off as the report might suggest.

### e) Judging committee

Will, Peter, and Vítězslav discussed the continuing work of their committee on WPC judging rules. When the proposed set of rules is ready, Will said it will be posted on the WPF website for discussion.

## New Business

### a) Soliciting members

Peter expressed his intention to solicit new WPF members and WPC participants during the next year. He asked current members to send him names and contact information for puzzlers and puzzle publications in nearby countries. Rob invited members to take extra copies of the Newsletter for distribution.

Valter Kvalic (Croatia) proposed broadening interest in the WPC/WPF by including knowledge and word puzzles in the WPC. The pros and cons of this

suggestion were discussed. György Istvan (Hungary) said that WPC-style logical puzzles were becoming increasingly popular in Hungary. Will said that the WPF has adopted standards of fairness in WPC puzzles (as printed in Newsletter #2, page 14), which don't include puzzles with language and cultural biases. Discussion of this topic will continue on the website forum.

### b) General assembly breaks

On behalf of Jan Farkas, a contestant from Slovakia, György proposed allowing breaks in the WPF general assembly meetings so that participants who are also team captains can perform their captain's duties. He also proposed allowing breaks before votes on important matters so that participants can consult their team members or others. This motion was passed 14-1.

### c) Membership fee

On behalf of the board, Rob proposed that the WPF membership fee for 2001-02 be set at 500 euros. Members who can afford more are encouraged to pay more, and members who cannot afford 500 euros may apply to the board for a reduction. This motion was passed 14-0.

### d) Copyrights

Rob discussed the issue of copyrights in WPC puzzles and the question of what rights to grant WPF members



for Internet use. The current rule is that the WPC organizer owns the copyright in the puzzles and grants WPF members a transferable license to reprint the puzzles within their respective countries. This rule, however, does not cover websites, whose audience does not stop at national boundaries. Rob suggested setting up a committee to explore the issues and draft a proposal. This suggestion was agreed upon. The committee will consist of Rob, György, and Hüsni.

In the meantime, György and Nick Baxter (USA) proposed that 10% of the WPC puzzles be available for posting on members' websites. The WPC organizer will select the 10%, and these puzzles will be the same for everyone. This motion was passed 15-2.

Will said that, notwithstanding the above, a few WPC puzzles will be made freely available to publications and websites – whether WPC members or not – for publicity purposes. Anyone using these puzzles will have to print the WPC organizer's copyright notice and contact information for the WPF.

#### e) 2003 WPC

Only one offer to host the 2003 WPC was received by the board before the general assembly, so according to the bylaws this was the only offer eligible to be considered. However, as another serious offer was brought to the meeting, it was proposed to consider all offers that might be made. This motion was passed 8-7.

Rob proposed the Netherlands, in or near Amsterdam, under the sponsorship of Puzzelsport. Valter Kvalic proposed Croatia, in the Adriatic area of

Kvarner, under the sponsorship of Feniks magazine. A paper ballot was held, and the Netherlands was selected 13-4.

#### f) Future WPC's

Tentative expressions of interest to host the 2004 WPC were made by Valter (Croatia), György (Hungary), and Peter de Hen (for France).

Erja Gullstén announced plans for the 11th WPC, which will be held in Oulu, Finland, provisionally during the last week of September. It will be organized by a Finnish puzzlers' organization. The sightseeing will include a bus trip to the Arctic Circle. The puzzles will be created by contributors from several countries, including Finland, and overseen by Peter Ritmeester. These puzzles will be checked for language and culture neutrality, as the WPC rules stipulate, by an international panel.

#### g) Election of board members

According to the meeting's agenda, two new WPF board members were due to be selected for three-year terms. György, however, proposed that rather than elect two new board members this year, the WPF elect four new members next year. This motion was passed 9-8.

## Closing

On behalf of the WPF, Will thanked Vitezslav and his associates for an exceptionally fine and well-run WPC. Vitezslav was enthusiastically applauded.

There being no further business, the meeting was adjourned at 16:45.

[Minutes prepared by Will Shortz, USA]

by Rob Geensen, The Netherlands

# WPF Financial report 2000-2001

## World Puzzle Federation Treasurer account

January 1<sup>st</sup> 2000 – June 30<sup>th</sup> 2001

Treasurer account January 1<sup>st</sup> 2000 € euros 0,00

In		€	euros
26-01-00	Netherlands	€	1.000,00
29-01-00	Czech Republic	€	500,00
31-01-00	Poland	€	500,00
03-02-00	Germany	€	998,20
08-02-00	Finland	€	500,00
25-02-00	Romania	€	250,00
01-03-00	Great Britain	€	500,00
22-03-00	USA	€	1.031,99
17-03-00	Japan	€	1.000,00
09-06-00	Turkey	€	487,20
19-07-00	Hungary	€	500,00
31-07-00	France	€	1.000,00
05-08-00	Korea	€	500,00
30-08-00	Croatia	€	500,00
06-09-00	Belgium	€	1.000,00
23-09-00	Argentina	€	480,00
14-10-00	Slovakia	€	500,00

**Total in** €11.247,39

Out		€	euros
Labor		€	4.878,63
€ 225 a month plus VAT			
Office costs		€	1.053,13
€ 50 a month plus VAT			
includes: facilities, supplies, telephone, stamps, Banking costs		€	69,59
to Office account WPF		€	1.361,34
10-01-01 Newsletter 5		€	581,63
<b>Total out</b>		€	7.944,32

**Treasurer account June 30<sup>th</sup> 2001** € 3.303,07

## World Puzzle Federation Office account

January 1<sup>st</sup> 2000 – June 30<sup>th</sup> 2001

Office account January 1<sup>st</sup> 2000 € euros 0,00

In		€	euros
07-02-00	from Treasurer account WPF	€	1.361,34
<b>Total in</b>		€	1.361,34

Out		€	euros
Fax/answering machine		€	282,06
Registering Wordpuzzle.com & org		€	133,30
Banking Costs		€	157,71
Logo advice & development		€	429,62
Incidentals		€	1,77
<b>Total out</b>		€	1.004,46

**Office account June 30<sup>th</sup> 2001** € 356,88

At the General Assembly in Stamford 2000 it was decided to change the WPF financial year from January - December to July - June. In this way the WPF Treasurer can present a more accurate report for the WPF General Assembly, which normally takes place in September or October.

This is the first report after this change, so the following report covers one year and a half. Starting with this report, all reports will be in euros only.

The WPF has two accounts. The Treasurer account is the official account of the WPF, and is overseen by the WPF Treasurer. The Office account is used for daily business by the WPF office and is overseen by the WPF General Secretary.

The following report was approved by the General Assembly in Brno 2001.

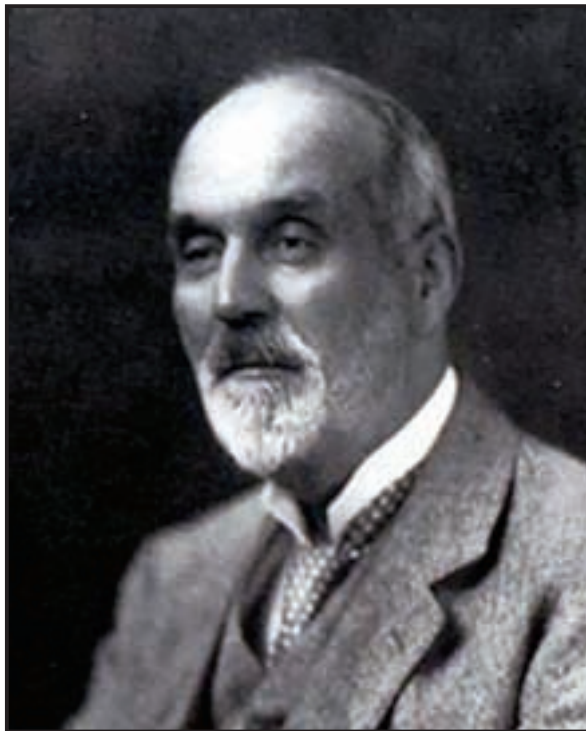






# Famous Puzzlemakers: Henry Ernest Dudeney

Henry Ernest Dudeney (1857-1930) was, according to Martin Gardner, England's greatest inventor of puzzles, especially mathematical ones. A London newspaper once called him 'the most ingenious brain in England.' For more than three decades, beginning in the 1890s, his work appeared in such popular publications as *The Weekly Dispatch*, *Cassell's Magazine*, *The Captain*, *The Royal Magazine*, *Blighty*, the *London Daily News*, and (most notably and for the longest time) *The Strand*, where his 'Perplexities' column appeared monthly from 1910-31.



Dudeney's puzzles tended to be more mathematically sophisticated than those of his slightly older rival in the United States, Sam Loyd (who was profiled here last issue). And like Loyd, Dudeney often clothed his puzzles in amusing stories. In fact, the two collaborated on a series of puzzles for the British *Tit-Bits* magazine during the late 1890s, before, apparently, having a falling out.

One of Dudeney's most famous puzzles, and a good example of his ingenuity, is 'The Spider and the Fly.' A spider is situated on a wall a certain distance from the floor at one end of a long, rectangular room. A fly is situated exactly opposite—the same distance down from the ceiling on the other side. Dudeney asked: What is the shortest route for the spider to reach the fly?

The 'obvious' answer of proceeding straight down, across the floor, and then up the far wall turns out to be wrong. Dudeney showed that the optimal answer requires traveling in a diagonal path crossing five of the six sides of the room!

The two best-known collections of Dudeney's work are 'The Canterbury Puzzles,' a parody of Geoffrey Chaucer's 'The Canterbury Tales,' in which each pilgrim in the story presents a puzzle for the others to solve; and 'Amusements in Mathematics,' a wide-ranging assortment of miscellaneous problems. Both books have been translated into many languages, and have been continuously in print in the United States for more than 40 years.

On the following page are four classic puzzles by Dudeney all selected directly from *The Strand*.

Solutions on page 29.

Henry Ernest Dudeney (1857-1930)

1	2	3	4	5
6	7	8	9	10
11	12	13	14	15
16	17	18	19	20

①	14	7	18	3
⑥	19	2	11	8
15	10	⑬	4	17
20	5	16	9	12

## 1. A Knight's Path

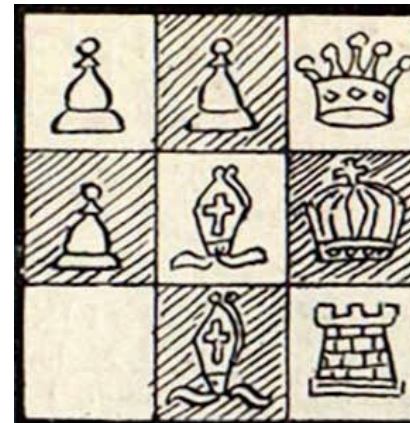
In the first diagram the numbers 1 to 20 are arranged in the 20 cells in regular numerical order. In the second diagram the numbers have been rearranged to form a chess knight's path, each successive number being a knight's move away from the last. Note that the three circled numbers, 1, 6, and 13, have not been moved from their original places in the first diagram.

The puzzle is to reconstruct the knight's path arrangement so that as many numbers as possible keep their original positions.

## 2. The Zigzag Puzzle

This curious little chess puzzle can be attempted by using the nine squares in the corner of a chessboard. The object is to move the king to the vacant square in the diagram, following the usual rules of chess.

The pawns are clearly incapable of any movement at all. The only special condition is that the king can never move to the central square; he must work around the side of the board. How can he reach the vacant square?



## 3. The Banner Puzzle

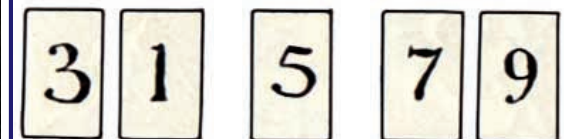
A lady had a square piece of cloth with two lions on it, as shown. She wished to cut the cloth into pieces that would fit together to form two square banners with a lion on each banner. She discovered that this can be done in just four pieces. How? No part of the material can be wasted. And to cut either British Lion would, of course, be an unpardonable offense. Remember that while the banners have to be perfect squares, they need not be of the same size.



## 4. The Five Cards

How can these five cards be arranged so that the number formed by the first pair multiplied by the number formed by the last pair, minus the central number, will produce a number composed of a single repeated digit?

In the example, 31 times 79, minus 5, equals 2,444 – which would have been all right if the 2 had been another 4.





# Present and future members

## Full membership

The World Puzzle Federation is an association of legal bodies with an interest in puzzles. Only one member per country can belong to the WPF. The WPF follows the Olympic standard in what constitutes a country. Below are the countries represented in the WPF and information on the legal bodies representing those countries. Most countries are represented by national puzzle federations, puzzle clubs or leading publishers of puzzle magazines.

## Individual membership

Individuals can become individual members which entitles them to a subscription to this Newsletter and

to participating in the World Puzzle Championship (WPC) if:

- their country is not yet represented there, and if
- there are not more than four individual members from that country

In case there are more than four individual members from a country that is not yet a WPF member, the board of the WPF will decide who will participate.

## Criteria for membership and the membership fee

Following is the relevant section from the WPF's *Rules and Regulations*. See also [www.worldpuzzle.org/wpf/regulations.htm](http://www.worldpuzzle.org/wpf/regulations.htm)

## 2. Membership

2-1 The minimum annual membership fee will be 500 euros. Exceptions can be made by the board.

2-2 The benefits of membership include:

- Right to use the WPF logo;
- Right to publish WPF puzzles (beginning in 2000) in the member's home country, including those from WPC's and qualifying tournaments of other WPF members;
- Right to send a team to the World Puzzle Championship;
- Right to vote on WPF matters during a general assembly.

2-3 The criteria for WPF membership are:

- Conducting open, national qualifying tournaments to select members of a WPC team;

- Promoting and publicizing these tournaments;
- Encouraging quality and innovation in puzzling;
- Representing the interests of the WPF in the member's country.

Membership can be possible without meeting these criteria, but only as long as there are no applicants from the same country meeting all these criteria.

2-4 If a country is already represented in the WPF and a second group would also like to represent that country, the board will first encourage the two groups to work together. If that is not possible, then the second group should apply for membership in writing, explaining why it would be a better representative for the country than the existing member. The board should study the proposal and make a decision, carefully considering the criteria outlined above.

2-5 The WPF will follow International Olympic Committee criteria in deciding which countries are eligible to be admitted to membership and to compete in the WPC.

2-6 Personal memberships will also be available to individuals. The fee will be 50 euros/year. The benefits of personal membership include:

- Subscription to the WPF newsletter;
- Right to visit all parts of the WPF website and to participate in online activities;
- Right to participate in the WPC if the person's country is not already represented by a national team

## ARGENTINA Ediciones de Mente Address:

Corrientes 1312 - 80  
C1043ABN  
Buenos Aires  
Argentina  
**Contact:**  
Mr. Jaime Poniachik, Director  
Phone: +54.11.43747907  
Fax: +54.11.43743829  
E-mail: [poniachik@sinectis.com.ar](mailto:poniachik@sinectis.com.ar)

## BELGIUM Keesing Publishers Belgium Address:

Keesinglaan 2  
2100 Antwerp  
Belgium  
**Contact:**  
Mr. Claude Montrieux, Director  
Tel: +32.(0)3.360 53 00  
Fax: +32.(0)3.324 38 98  
E-mail:  
[claudemontrieux@keesing.be](mailto:claudemontrieux@keesing.be)

## BULGARIA Mensa - Bulgaria Address:

Mensa - Bulgaria  
26, Sheinovo Str.  
SOFIA - 1504  
Bulgaria

**Contact:**  
Mrs. Rossy Alexieva, Honorary  
President  
Tel: +359.2.442349  
Fax: +359.2.44.72.49  
E-mail: [mensa-bg@mail.bol.bg](mailto:mensa-bg@mail.bol.bg)

## CROATIA Hrvatski Zagonetacki Savez (Croatian Puzzle Federation) Address:

FENIKS, Pero Galogaza  
Hrvatski Zagonetacki Savez  
Zvonimirova 20 A  
51000 Rijeka  
Croatia  
**Contact:**  
Mr. Pero Galogaza, president  
Tel: +38.551650105  
Fax: +38.551672114  
E-mail: [nl-feniks@novi-list.tel.hr](mailto:nl-feniks@novi-list.tel.hr)

## CZECH REPUBLIC Svaz českých hádkáru a křížovkáru (SCHAK) Address:

Malešická 87/204  
108 80 Praha 10  
Czech Republic  
**Contact:**  
Mr. Vítězslav Koudelka,  
vice-chairman WPF  
KIRA Publishing House  
POB 33  
635 00 Brno-Bystrc  
Czech Republic  
Tel: +420.5.46 21 01 75

Fax: +420.2.46 21 01 75  
E-mail: [kira@kira.cz](mailto:kira@kira.cz)

## FINLAND Suomen puzzle-harrastajat Ahaa! (Finnish Puzzle Association Aha!) Address:

Ms. Erja Gullstén  
Töytäöhyyppäntie 4  
90540 OULU  
Finland  
**Contact:**  
Ms. Erja Gullstén, President  
Tel: +358.8.556 8546  
Tel, gsm: +358.50.529 4327  
E-mail: [erja.gullsten@pp.inet.fi](mailto:erja.gullsten@pp.inet.fi)

## FRANCE Keesing France Address:

114, rue Chaptal  
92532 Levallois-Cedex  
FRANCE  
**Contact:**  
Mr. Xavier de Bure, Managing Director  
Tel: +33.1.41490959  
Fax: +33.1.41490989  
E-mail: [pfroideval@keesing.fr](mailto:pfroideval@keesing.fr)

## GERMANY Verlagsgruppe Lübbe GmbH & Co. KG Visiting address:

Scheidtbachstraße 23 - 31  
51469 Bergisch Gladbach  
Germany

**Mail Address:**  
Postfach 20 01 80  
51431 Bergisch Gladbach  
Germany  
**Contact:**  
Mr. Andreas Franz, Editor-in-Chief  
Tel: +39.2202.121 363  
Fax: +39.2202.121 925  
E-mail: [bastei@berg.net](mailto:bastei@berg.net)

## HUNGARY Rejtvényfejtők Országos Egyesülete (Hungarian Puzzlers' Association) Address:

ROE  
POB. 13  
1752 Budapest  
Hungary  
**Contact:**  
Mr. György István, president  
Phone: +36-1-388-5946  
Fax: +36-1-388-5946  
E-mail: [roe99@extra.hu](mailto:roe99@extra.hu)

## JAPAN Sekaibunka Publishing Inc. Address:

4 - 2 - 29 Kudan-kita  
Chiyoda-ku  
102-8187 Tokyo  
Japan

**Contact:**  
Mr. Yoshihide Kuwada,  
Editor-in-Chief  
Tel: +81.3.3262.5152  
Fax: +81.3.3262.5330  
**E-mail:**  
[y-kuwada@sekaibunka.co.jp](mailto:y-kuwada@sekaibunka.co.jp)

## KOREA Puzzleland Co. Address:

Puzzleland Co. (Park Jubong)  
#601, Hansung Bldg. 10-6 Gal-  
wol-dong  
Yongsan-gu, Seoul  
140-150  
KOREA  
**Contact:**  
Mr. J. B. Park, Director  
Phone: 822-775-2030  
Fax: 822-3789-0375  
E-mail:  
[webmaster@puzzleland.co.kr](mailto:webmaster@puzzleland.co.kr)

## POLAND Wiem Sp. Z o.o. Address:

Wiem Sp. Z o.o.  
ul. Belgradzka 22/16  
02-793 Warszawa  
Poland  
**Contact:**  
Mr. Marek Penszko, president  
Tel: +48-22-641-60-30  
Fax: +48-22-641-60-30  
E-mail: [m.penszko@gazeta.pl](mailto:m.penszko@gazeta.pl)

## ROMANIA Rebus Labyrinth Puzzle Agency Address:

Str. Saturn 40 - A - 10  
2200 Brasov  
Romania  
**Contact:**  
Mr. Ovidiu Sperlea, Manager  
Tel: +49.7142.31517  
Fax: +49.7142.31517  
E-mail: [sperlea@z.zgs.de](mailto:sperlea@z.zgs.de)

## SLOVAKIA Slovenský zväz hádkárov a křížovkárov Address:

M. Dulu 34 / 74  
MARTIN, 036 08  
SLOVAKIA  
**Contact:**  
Mr. Ján Farkaš, chairman  
Tel: +421.842.4281761  
E-mail: [dopza@zsr.sk](mailto:dopza@zsr.sk)

## Switzerland Swiss Puzzle Federation Address:

Am Pfisterhoelzli 18  
80606 Greifensee  
Switzerland  
**Contact:**  
Mr. Mark Stenzler, President  
Phone: +41 1 940 0728  
**E-mail:**  
[puzzles@active.ch](mailto:puzzles@active.ch)

## THE NETHERLANDS Sanoma Uitgevers BV (Puzzelsport) Visiting Address:

Capellalaan 65  
2132 JL Hoofddorp  
The Netherlands  
**Mail Address:**  
Postbus 1790  
2130 JD Hoofddorp  
The Netherlands  
**Contact:**  
Mr. Rob Geensen, Editor-in-Chief  
Tel: +31.(0)23.556 48 63  
Fax: +31.(0)23.556 48 40  
E-mail:  
[r.geensen@sanoma-uitgevers.nl](mailto:r.geensen@sanoma-uitgevers.nl)

## TURKEY SÖZ YAYIN OYUNAJANS PUBLISHING & PUZZLES LTD Visiting Address:

SÖZ YAYIN OYUNAJANS  
PUBLISHING & PUZZLES LTD  
4. Gazeteciler Sitesi,  
C-2 D:9 Levent  
80630 Istanbul  
TURKEY  
**Mail:**  
SÖZ YAYIN OYUNAJANS  
PUBLISHING & PUZZLES LTD  
Mr. Nevzat Erkmen  
P. K. 7 Levent  
80622 Istanbul  
TURKEY

**Contact:**  
Mr. Hüseyin Nevzat Erkmen  
Tel: +90.212.2806701  
Fax: +90.212.2806803  
E-mail: [nerkmen@turk.net](mailto:nerkmen@turk.net)

## UKRAINE Publishing House 'TV-Park' - 'Crosswords&Puzzles' Newspaper Address:

Publishing House 'TV-Park' -  
'Crosswords&Puzzles' Newspaper  
Ms. Irene Kiryatskaya,  
Editor-in-Chief  
6 Krasnykh Kazakov Avenue  
Kyiv 04073  
Ukraine  
**Contact:**  
Mr. Serhiy Grabarchuk, Adviser  
Tel: +380-31-222-6176  
Fax: +380-31-222-6176  
E-mail:  
[serhiy-g@karpaty.uzhgorod.ua](mailto:serhiy-g@karpaty.uzhgorod.ua)

## U.S.A World Puzzle Championship / USA Address:

Will Shortz  
55 Great Oak Lane  
Pleasantville, NY 10570 U.S.A.  
**Contact:**  
Mr. Will Shortz, Director  
Tel: +1.914.769 9128  
Fax: +1.914.769 9128  
E-mail: [wshortz@aol.com](mailto:wshortz@aol.com)

